

VertexDr

BETTER DECISIONS WITH BETTER DATA

MAY 3, 2018 | VERTEXDR CLIENT FORUM

TED NEWMAN

a MERIDIAN MEDICAL MANAGEMENT company

Proprietary Rights

This document is the confidential property of Meridian Medical Management. No part of this document may be reproduced in any form, by Photostat, microfilm, xerography, or any other means, or incorporated into any information retrieval system, electronic or mechanical, without the written permission of Meridian Medical Management. Inquiries regarding copying and/or using the materials contained in this document outside of the limited scope described herein should be addressed to:

Meridian Medical Management
1095 Day Hill Road
Windsor, CT 01095



Please silence or turn off all
electronic devices at this time.

THANK YOU

Key Performance Indicators

CPA to Match to Month end Reports

VertexDr Total AR \$1,030,954

Data Headers Drop Column Fields Here

Calendar ExtPeriod	Grand Total														
	Charges	WithoutPQR	TotalPmts	InsPmts	PatPmts	TotalAdj	InsAdj	PatAdj	Refunds	AmtRem	GrossCollRatio	NetCollRatio	RbRvs	RbRvuWork	Count
201704	\$633,706	4,034	\$295,756	\$254,797	\$40,959	\$316,226	\$298,270	\$17,955	\$186	\$3,168	46.7%	93.2%	9,338.89	3,889.51	14,134.00
201705	\$744,507	4,716	\$357,457	\$313,791	\$43,666	\$384,701	\$376,351	\$8,350	\$314	\$3,987	48.0%	99.3%	11,107.32	4,595.80	17,413.00
201706	\$674,680	4,544	\$389,143	\$346,183	\$42,961	\$409,073	\$380,029	\$29,043	\$508	\$3,204	57.7%	146.5%	10,103.01	4,195.65	17,991.00
201707	\$609,423	3,952	\$288,363	\$251,192	\$37,171	\$303,538	\$286,763	\$16,776	\$0	\$10,824	47.3%	94.3%	8,997.49	3,748.29	14,608.00
201708	\$675,762	4,160	\$312,492	\$271,614	\$40,878	\$354,476	\$324,811	\$29,665	\$0	\$8,568	46.2%	97.3%	10,168.08	4,263.21	16,083.00
201709	\$707,705	4,682	\$297,415	\$251,873	\$45,542	\$293,447	\$278,764	\$14,683	\$0	\$11,437	42.0%	71.8%	10,720.07	4,403.62	14,817.00
201710	\$839,858	4,878	\$399,354	\$356,091	\$43,263	\$409,713	\$411,530	-\$1,817	\$0	\$15,179	47.6%	92.8%	12,072.99	5,052.92	18,073.00
201711	\$785,028	4,782	\$343,332	\$307,039	\$36,293	\$371,983	\$353,223	\$18,760	\$0	\$17,618	43.7%	83.1%	11,340.40	4,726.69	16,266.00
201712	\$645,672	3,981	\$355,759	\$324,463	\$31,296	\$429,900	\$399,887	\$30,013	\$196	\$16,806	55.1%	164.9%	9,409.34	3,927.96	16,516.00
201801	\$669,005	3,890	\$286,804	\$248,030	\$38,774	\$349,349	\$323,586	\$25,763	\$0	\$30,939	42.9%	89.7%	9,736.84	4,030.71	15,087.00
201802	\$652,998	3,786	\$291,743	\$251,704	\$40,039	\$349,613	\$334,593	\$15,020	\$174	\$81,514	44.7%	96.2%	9,425.80	3,940.17	13,202.00
201803	\$800,474	4,711	\$307,981	\$270,376	\$37,606	\$355,839	\$338,796	\$17,043	\$50	\$261,294	38.5%	69.3%	11,621.87	4,796.77	14,325.00
201804	\$639,233	3,725	\$274,948	\$239,381	\$35,567	\$343,948	\$324,995	\$18,952	\$25	\$485,047	43.0%	93.1%	9,228.46	3,807.07	13,493.00
Grand Total	\$9,078,050	55,841	\$4,200,547	\$3,686,534	\$514,014	\$4,671,805	\$4,431,598	\$240,207	\$1,452	\$949,585	46.3%	95.3%	133,270.56	55,378.37	202,008.00

Date of Service

Charges by Date of Service will not match your month end reports. The payments, adjustments, refunds, etc. will apply to those charges. A true view of Amount Remaining.

VertexDr Total AR \$1,030,954

ProfilePracticeAddressName ProvidingPhysician FullName Financial Class Description ServiceLocation Desc PrimaryInsurance Desc DivisionDescription

Data Headers Drop Column Fields Here

FromService YrMonthInt	Grand Total													
	Charges	Count	InsurancePayment	PatientPayment	TotalPmts	InsuranceAdjustment	PatientAdjustment	TotalAdj	Refunds	AmountRemaining	RVU	WorkRVU	GossColl	NetColl
201704	\$664,291	4,258	\$281,035	\$38,960	\$319,995	\$322,077	\$18,758	\$340,835	\$25	\$3,485.97	9,801.28	4,075.12	48.2%	98.9%
201705	\$730,962	4,604	\$308,320	\$40,844	\$349,163	\$356,861	\$19,887	\$376,748	\$0	\$3,829.37	10,879.27	4,502.18	47.8%	98.6%
201706	\$632,702	4,258	\$267,948	\$39,584	\$307,532	\$303,689	\$19,060	\$322,749	\$0	\$3,641.89	9,477.63	3,929.33	48.6%	99.2%
201707	\$596,351	3,878	\$252,581	\$35,251	\$287,832	\$283,500	\$13,598	\$297,098	\$0	\$11,421.43	8,918.66	3,713.34	48.3%	96.2%
201708	\$745,080	4,672	\$317,206	\$41,821	\$359,028	\$356,605	\$20,749	\$377,354	\$294	\$8,992.00	11,130.76	4,661.90	48.2%	97.6%
201709	\$654,449	4,219	\$271,018	\$40,847	\$311,865	\$316,861	\$15,141	\$332,003	\$0	\$10,581.25	9,781.83	4,032.47	47.7%	96.7%
201710	\$851,150	4,981	\$352,617	\$46,216	\$398,833	\$412,899	\$21,660	\$434,559	\$0	\$17,757.83	12,260.86	5,134.66	46.9%	95.7%
201711	\$767,453	4,689	\$313,885	\$35,118	\$349,003	\$380,657	\$20,977	\$401,634	\$0	\$16,815.84	11,098.78	4,622.55	45.5%	95.4%
201712	\$646,520	3,959	\$263,074	\$27,817	\$290,891	\$321,443	\$15,847	\$337,290	\$0	\$18,338.97	9,386.56	3,915.11	45.0%	94.1%
201801	\$703,186	4,003	\$266,985	\$30,012	\$296,996	\$364,798	\$10,375	\$375,173	\$25	\$31,041.55	10,187.36	4,236.17	42.2%	90.5%
201802	\$652,663	3,872	\$219,693	\$24,403	\$244,096	\$304,839	\$15,255	\$320,095	\$50	\$88,523.22	9,504.67	3,962.57	37.4%	73.4%
201803	\$773,728	4,535	\$216,218	\$19,560	\$235,778	\$276,479	\$5,030	\$281,510	\$0	\$256,440.45	11,201.41	4,618.04	30.5%	47.9%
201804	\$629,067	3,664	\$56,897	\$15,911	\$72,809	\$77,282	\$1,363	\$78,645	\$0	\$477,612.98	9,097.39	3,753.41	11.6%	13.2%
Grand Total	\$9,047,602	55,592	\$3,387,478	\$436,344	\$3,823,822	\$4,077,991	\$197,700	\$4,275,692	\$394	\$948,482.75	132,726.46	55,156.85	42.3%	80.1%

Matching Date of Service

Charges by Date of Service will not match your month end reports. The Total Payments and Amount remaining apply to those Charges

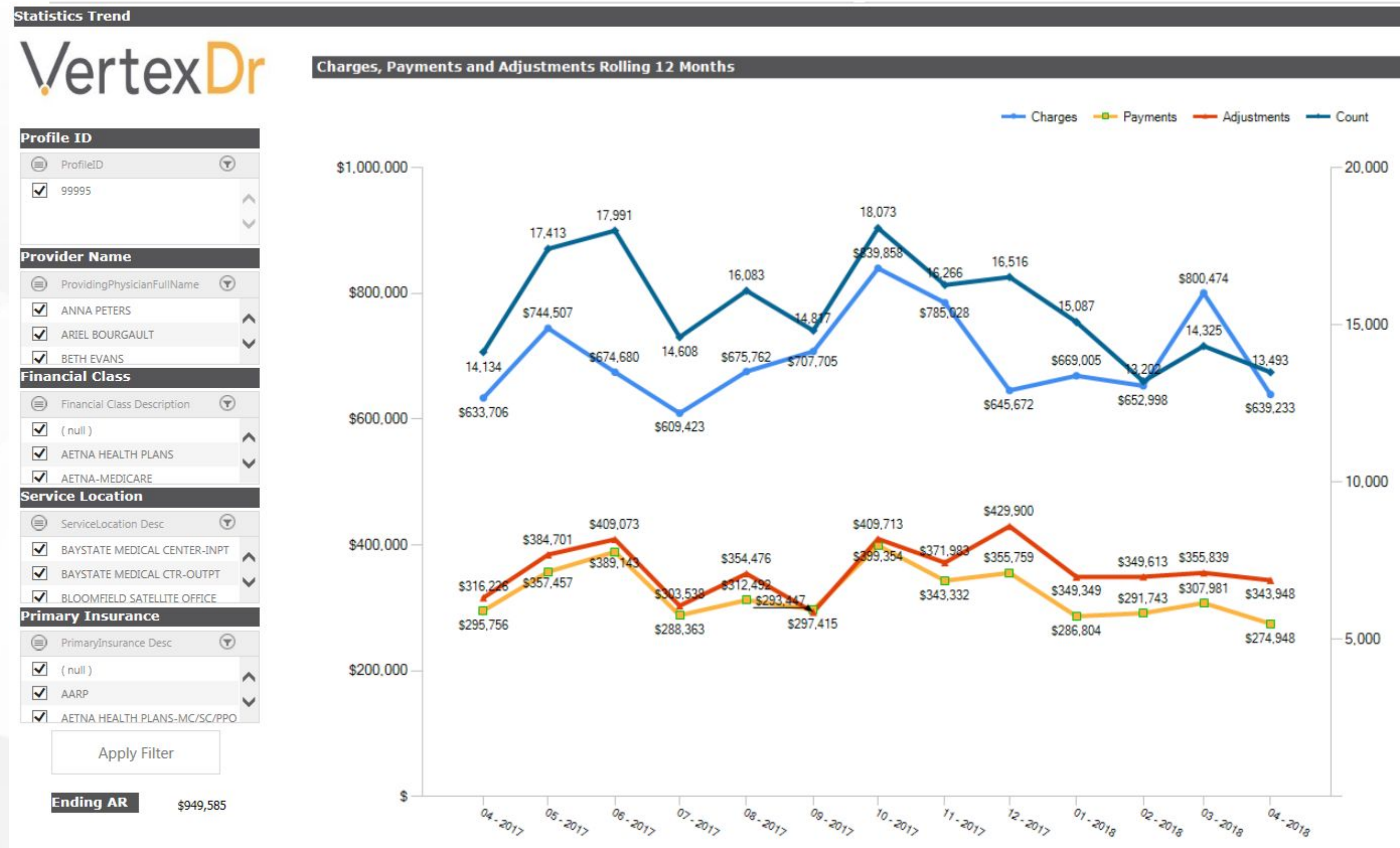
ProfileID

Data Headers: FromService YrMonthInt, PostedDateYYYYMM, ProvidingPhysicianFullName

Drop Column Fields Here: Grand Total (Charges, TotalPmts, AmountRemaining)

FromService YrMonthInt	PostedDateYYYYMM	ProvidingPhysicianFullName	Grand Total		
			Charges	TotalPmts	AmountRemaining
201611	201611		\$328,225.62	53,895.75	388.31
	201612		\$264,777.93	159,605.16	214.03
	201701		\$200.00	56,488.95	0.00
	201702		(\$188.00)	6,272.95	0.00
	201703		(\$221.00)	9,947.84	0.00
	201704		(\$539.00)	2,700.79	0.00
	201705		(\$441.28)	3,454.01	0.00
	201706		(\$158.00)	1,497.54	0.00
	201707		\$0.00	269.81	0.00
	201708		(\$180.00)	144.65	0.00
	201709		\$0.00	374.27	0.00
	201710		\$0.00	230.57	0.00
	201711		\$0.00	507.10	0.00
	201712		\$0.00	377.07	0.00
	201801		\$0.00	30.00	0.00
	201802		\$0.00	175.23	0.00
201803		\$0.00	142.81	0.00	
201804		\$0.00	22.20	0.00	
201611 Total			\$591,476.27	296,136.70	602.34
	201612		\$447,484.60	29,810.92	342.71
	201701		\$68,163.16	167,648.98	481.76
	201702		\$4,420.00	41,333.11	0.00
	201703		(\$342.00)	10,247.19	133.00
	201704		(\$135.00)	4,258.62	0.00
	201705		\$0.00	3,231.92	0.00
	201706		\$0.00	1,644.91	0.00
201707		\$0.00	272.77	0.00	

Statistics Trend



Volume by Location

Volumes by Service Location

VertexDr

ChgWithCPTNoMIPS TotalPayments TotalAdjustments

ProvidingPhysicianFullName FinancialClassCode and Desc PrimaryInsurance Desc

Charges CPTCt Calendar ExtPeriod

ServiceLocation Desc	201706		201707		201708		201709		201710		201711		201712		201801		201802		201803		201804		Grand Total		
	Ct	Charges	CPTCt	Charges	CPTCt	Charges	CPTCt	Charges	CPTCt	Charges	CPTCt	Charges	CPTCt	Charges	CPTCt	Charges	CPTCt	Charges	CPTCt	Charges	CPTCt	Charges	CPTCt	Charges	CPTCt
BAYSTATE MEDICAL CENTER-INPT	1	\$ 0	0	\$ 0	\$ 210	1	\$ 0	\$ 0	\$ 0					\$ 0										\$ 335	2
BAYSTATE MEDICAL CTR-OUTPT	9	\$ 14,920	10	\$ 19,250	12	\$ 13,995	9	\$ 26,745	15	\$ 76,575	45	\$ 30,445	19	\$ 33,250	19	\$ 22,850	13	\$ 56,750	35	\$ 21,750	12	\$ 43,000	25	\$ 390,030	233
BLOOMFIELD SATELLITE OFFICE	341	\$ 170,840	1,332	\$ 145,257	1,108	\$ 172,513	1,327	\$ 174,034	1,314	\$ 161,038	1,242	\$ 178,214	1,318	\$ 139,436	1,060	\$ 149,347	1,126	\$ 143,481	1,077	\$ 162,049	1,240	\$ 129,012	951	\$ 2,099,970	16,029
CATARACT LASER CENTER	83	\$ 84,145	53	\$ 79,685	47	\$ 122,455	80	\$ 78,585	51	\$ 139,420	90	\$ 128,515	84	\$ 75,935	56	\$ 131,135	92	\$ 114,670	81	\$ 140,190	90	\$ 103,200	68	\$ 1,430,990	946
DR MENZER EYE PRACTICE	976	\$ 401,475	3,147	\$ 359,221	2,780	\$ 356,219	2,734	\$ 428,341	3,303	\$ 448,320	3,490	\$ 434,284	3,352	\$ 385,281	2,837	\$ 357,623	2,654	\$ 338,097	2,593	\$ 464,105	3,359	\$ 362,961	2,679	\$ 5,058,980	38,556
MERCY MEDICAL CENTER-OUTPT																	\$ 0	\$ 190	1	\$ 0			\$ 190	1	
SURGERY CENTER OF NEW ENGLAND	6	\$ 3,300	2	\$ 6,010	5	\$ 10,370	9	\$ -1	\$ 14,505	11	\$ 13,570	9	\$ 11,770	9	\$ 8,050	5	\$ 0	\$ 0	\$ 12,190	9	\$ 1,060	2	\$ 97,555	74	
Grand Total	716	\$ 674,680	4,544	\$ 609,423	3,952	\$ 675,762	4,160	\$ 707,705	4,682	\$ 839,858	4,878	\$ 785,028	4,782	\$ 645,672	3,981	\$ 669,005	3,890	\$ 652,998	3,786	\$ 800,474	4,711	\$ 639,233	3,725	\$ 9,078,050	55,841

AR by Service Date No Credits

Outstanding AR by Date of Service

VertexDr

AR Export PrimIns Financial Class Primary Insurance

ProfileID ServiceLocation Desc ProvidingPhysicianFullName DivisionDescription Procedure Code From Svc Age Lag Buckets

AR Drop Column Fields Here

PrimaryInsurance Desc	AR Total
	\$4,739
AARP	\$1,503
AETNA HEALTH PLANS-MC/SC/PPO	\$7,578
AETNA-COMMERCIAL	\$5,994
AETNA-MEDICARE	\$611
ALLIED BENEFITS GROUP	\$220
AMERICAN POSTAL WORKERS UNION	\$217
AUTO INSURANCE	\$250
BLUE BENEFIT ADMIN-VNA PREFIX	\$354
BLUE CR/BLUE SHLD ANTHEM	\$1,392
BLUE CROSS/BLUE SHLD MASS	\$60,059
BMC CONNECTOR	\$517
CHAMPVA	\$465
CIGNA HEALTH PLANS HMOS	\$26,504
CIGNA INDEMNITY	\$967
COMMERCIAL INSURANCE	\$9,647
COMMONWEALTH CARE ALLIANCE	\$209,882
COMMONWEALTH INDEMNITY PLAN	\$7,082
CONNECTICARE	\$4,988
CONNECTICARE-MEDICARE	\$500
DAVIS VISION	\$272
EVERCARE	\$2,217
EYEMED	\$16,587

AR by Posted Date No Credits

Outstanding AR by Posted Date

VertexDr

AR Export PrimIns Financial Class Primary Insurance

ProfileID Financial Class Description ServiceLocation Desc ProvidingPhysicianFullName OrigDepartmentDesc Post Date Age Lag Buckets

AR Drop Column Fields Here

PrimaryInsurance Desc	AR Total
	\$4,739
AARP	\$1,503
AETNA HEALTH PLANS-MC/SC/PPO	\$7,578
AETNA-COMMERCIAL	\$5,994
AETNA-MEDICARE	\$611
ALLIED BENEFITS GROUP	\$220
AMERICAN POSTAL WORKERS UNION	\$217
AUTO INSURANCE	\$250
BLUE BENEFIT ADMIN-VNA PREFIX	\$354
BLUE CR/BLUE SHLD ANTHEM	\$1,392
BLUE CROSS/BLUE SHLD MASS	\$60,059
BMC CONNECTOR	\$517
CHAMPVA	\$465
CIGNA HEALTH PLANS HMOS	\$26,504
CIGNA INDEMNITY	\$967
COMMERCIAL INSURANCE	\$9,647
COMMONWEALTH CARE ALLIANCE	\$209,882
COMMONWEALTH INDEMNITY PLAN	\$7,082
CONNECTICARE	\$4,988
CONNECTICARE-MEDICARE	\$500
DAVIS VISION	\$272
EVERCARE	\$2,217
EYEMED	\$16,587

AR with Credits

Outstanding AR by Posted Date and Date of Service with Credits (Use Pivot Grid for Date of Service)

ProfileID From Svc Age Lag Buckets DivisionDescription Financial Class Description

AmountRemaining Drop Column Fields Here

Post Date Age Lag Buckets <input type="text"/>	AmountRemaining Total
a: 0-30	546,944.97
b: 31-60	222,473.32
c: 61-90	64,320.94
d: 91-120	25,708.82
e: 121-180	36,049.39
f: 181-365	51,568.48
g: >365	15,204.91
Grand Total	962,270.83

CPT Compare

CPT Comparison (MIPS Excluded)

VertexDr

ProfilePracticeAddressName ProvidingPhysician FullName Financial Class Description ServiceLocation Desc PrimaryInsurance Desc Calendar ExtPeriod

Data Headers

Calendar Year

Proc Code and Description	2017			2018			Grand Total		
	Charges	Count	TotalPmts	Charges	Count	TotalPmts	Charges	Count	TotalPmts
0191T - INSERTION OF ANTERIOR SEGMENT AQUEOUS DRAINAGE DEV	\$66,203	903	\$61,845	\$12,605	275	\$19,671	\$78,808	1,178	\$81,516
0474T - INSERTION OF ANTERIOR SEGMENT AQUEOUS DRAINAGE DEV	\$55,200	46	\$19,817	\$8,400	7	\$3,891	\$63,600	53	\$23,708
11401 - REMOVAL OF SKIN LESION	\$11,265	15	\$0	\$2,190	2	\$1,717	\$13,455	17	\$1,717
11900 - INJECTION INTO SKIN LESIONS	\$225	1	\$0	\$225	1	\$225	\$450	2	\$225
12011 - REPAIR SUPERFICIAL WOUND(S)	\$95	1	\$58				\$95	1	\$58
15822 - REVISION OF UPPER EYELID	\$115	1	\$88				\$115	1	\$88
2027F - OPTIC NERVE HEAD EVALUATION PERFORMED (EC)	\$3,400	3	\$1,590	\$2,400	2	\$936	\$5,800	5	\$2,526
64612 - DESTROY NERVE, FACE MUSCLE	\$	0	\$0				\$	0	\$0
65205 - REMOVE FOREIGN BODY FROM EYE	\$2,500	4	\$1,008	\$250	1	\$136	\$2,750	5	\$1,144
65210 - REMOVE FOREIGN BODY FROM EYE	\$625	5	\$377	\$125	1	\$71	\$750	6	\$448
65222 - REMOVE FOREIGN BODY FROM EYE	\$600	8	\$514	\$300	4	\$128	\$900	12	\$641
65235 - REMOVE FOREIGN BODY FROM EYE	\$3,640	26	\$1,783	\$560	4	\$199	\$4,200	30	\$1,982
65272 - REPAIR OF EYE WOUND				\$1,000	1	\$0	\$1,000	1	\$0
65280 - REPAIR OF EYE WOUND	\$	0	\$0				\$	0	\$0
65426 - REMOVAL OF EYE LESION				\$2,000	1	\$0	\$2,000	1	\$0
65430 - CORNEAL SMEAR	\$8,250	11	\$4,040	\$5,250	7	\$2,926	\$13,500	18	\$6,966
65435 - CURETTE/TREAT CORNEA	\$390	2	\$0	\$	0	\$0	\$390	2	\$0
65600 - REVISION OF CORNEA	\$875	7	\$566	\$750	5	\$171	\$1,625	12	\$736
65772 - CORRECTION OF ASTIGMATISM	\$1,840	4	\$1,506	\$460	1	\$314	\$2,300	5	\$1,820
65778 - PLACEMENT OF AMNIOTIC MEMBRANE ON THE OCULAR SURFA	\$3,500	12	\$3,671	\$500	0	\$344	\$4,000	12	\$4,014
65780 - OCULAR SURFACE RECONSTRUCTION; AMNIOTIC MEMBRANE T	\$10,500	6	\$6,830				\$10,500	6	\$6,830
65820 - RELIEVE INNER EYE PRESSURE	\$9,000	5	\$3,179	\$7,500	5	\$2,666	\$16,500	10	\$5,845
	\$15,000	10	\$7,235	\$22,500	15	\$10,097	\$37,500	25	\$17,331

Transaction Code Compare

Transaction Code Comparison										
ProfilePracticeAddressName		ProvidingPhysician_FullName		Calendar_ExtPeriod						
Data Headers		Calendar Year								
OriginalTransactionCode	TransactionDesc	2017			2018			Grand Total		
		Charges	Count	TotalPmts	Charges	Count	TotalPmts	Charges	Count	TotalPmts
0191T		\$55,200	46	\$19,817	\$8,400	7	\$3,891	\$63,600	53	\$23,7
0474T		\$11,265	15	\$0	\$2,190	2	\$1,717	\$13,455	17	\$1,7
11401		\$225	1	\$0	\$225	1	\$225	\$450	2	\$2
11900		\$95	1	\$58				\$95	1	\$
12011		\$115	1	\$88				\$115	1	\$
15822		\$3,400	3	\$1,590	\$2,400	2	\$936	\$5,800	5	\$2,5
2027F		\$	0	\$0				\$	0	
64612		\$2,500	4	\$1,008	\$250	1	\$136	\$2,750	5	\$1,1
65205		\$625	5	\$377	\$125	1	\$71	\$750	6	\$4
65210		\$600	8	\$514	\$300	4	\$128	\$900	12	\$6
65222		\$3,640	26	\$1,783	\$560	4	\$199	\$4,200	30	\$1,9
65235					\$1,000	1	\$0	\$1,000	1	
65272		\$	0	\$0				\$	0	
65280					\$2,000	1	\$0	\$2,000	1	
65426		\$8,250	11	\$4,040	\$5,250	7	\$2,926	\$13,500	18	\$6,9
65430		\$390	2	\$0	\$	0	\$0	\$390	2	
65435		\$875	7	\$566	\$750	5	\$171	\$1,625	12	\$7
65600		\$1,840	4	\$1,506	\$460	1	\$314	\$2,300	5	\$1,8
65772		\$3,500	12	\$3,671	\$500	0	\$344	\$4,000	12	\$4,0
65778		\$10,500	6	\$6,830				\$10,500	6	\$6,8
65780		\$9,000	5	\$3,179	\$7,500	5	\$2,666	\$16,500	10	\$5,8
65820		\$15,000	10	\$7,235	\$22,500	15	\$10,097	\$37,500	25	\$17,3
65855		\$50,880	94	\$21,804	\$31,270	59	\$12,817	\$82,150	153	\$34,6
65865		\$3,750	5	\$1,369				\$3,750	5	\$1,3
65875		\$3,000	2	\$522				\$3,000	2	\$5
65930					\$1,200	1	\$478	\$1,200	1	\$4
66170		\$	0	\$0				\$	0	

CPT Analysis

CPT Analysis

VertexDr Total AR \$1,030,954

Calendar Year | Calendar Month | Financial Class Description | ProvidingPhysicianFullName | ServiceLocation Desc | ProfileID

Data Headers | Drop Column Fields Here

Proc Code and Description	Grand Total										
	Charges	Count	InsurancePayment	PatientPayment	TotalPmts	InsuranceAdjustment	PatientAdjustment	TotalAdj	% Reimb	Refunds	AmountRemaining
0191T - INSERTION OF ANTERIOR SEGMENT AQUEOUS DRAINAGE DEV	\$63,600	53	\$23,310	\$398	\$23,708	\$44,288	\$3,784	\$48,072	37.3%	\$0	\$3,765
0474T - INSERTION OF ANTERIOR SEGMENT AQUEOUS DRAINAGE DEV	\$13,455	17	\$1,717	\$0	\$1,717	\$2,676	\$0	\$2,676	12.8%	\$0	\$9,062
11401 - REMOVAL OF SKIN LESION	\$450	2	\$225	\$0	\$225	\$0	\$225	\$225	50.0%	\$0	\$0
11900 - INJECTION INTO SKIN LESIONS	\$95	1	\$58	\$0	\$58	\$37	\$0	\$37	61.1%	\$0	\$0
12011 - REPAIR SUPERFICIAL WOUND(S)	\$115	1	\$88	\$0	\$88	\$27	\$0	\$27	76.7%	\$0	\$0
15822 - REVISION OF UPPER EYELID	\$5,800	5	\$2,526	\$0	\$2,526	\$3,024	\$124	\$3,148	43.5%	\$0	\$126
2027F - OPTIC NERVE HEAD EVALUATION PERFORMED (EC)	\$0	0	\$0	\$0	\$0	\$0	\$0	\$0	.0%	\$0	\$0
64612 - DESTROY NERVE, FACE MUSCLE	\$2,750	5	\$1,064	\$80	\$1,144	\$1,556	\$50	\$1,606	41.6%	\$0	\$0
65205 - REMOVE FOREIGN BODY FROM EYE	\$750	6	\$226	\$222	\$448	\$524	\$12	\$536	59.8%	\$0	\$0
65210 - REMOVE FOREIGN BODY FROM EYE	\$900	12	\$641	\$0	\$641	\$148	\$14	\$163	71.3%	\$0	\$150
65222 - REMOVE FOREIGN BODY FROM EYE	\$4,200	30	\$1,542	\$440	\$1,982	\$1,924	\$0	\$1,924	47.2%	\$0	\$574
65235 - REMOVE FOREIGN BODY FROM EYE	\$1,000	1	\$0	\$0	\$0	\$0	\$0	\$0	.0%	\$0	\$1,000
65272 - REPAIR OF EYE WOUND	\$0	0	\$0	\$0	\$0	\$0	\$0	\$0	.0%	\$0	\$0
65280 - REPAIR OF EYE WOUND	\$2,000	1	\$0	\$0	\$0	\$0	\$0	\$0	.0%	\$0	\$2,000
65426 - REMOVAL OF EYE LESION	\$13,500	18	\$6,916	\$50	\$6,966	\$5,550	\$202	\$5,752	51.6%	\$0	\$2,408
65430 - CORNEAL SMEAR	\$390	2	\$0	\$0	\$0	\$0	-\$24	-\$24	.1%	\$0	\$195
65435 - CURETTE/TREAT CORNEA	\$1,625	12	\$736	\$0	\$736	\$264	\$142	\$405	45.3%	\$0	\$500
65600 - REVISION OF CORNEA	\$2,300	5	\$1,820	\$0	\$1,820	\$480	\$0	\$480	79.1%	\$0	\$0
65772 - CORRECTION OF ASTIGMATISM	\$4,000	12	\$380	\$3,635	\$4,014	\$578	\$30	\$607	100.4%	\$0	-\$621
65778 - PLACEMENT OF AMNIOTIC MEMBRANE ON THE OCULAR SURFA	\$10,500	6	\$6,830	\$0	\$6,830	\$3,670	\$0	\$3,670	65.0%	\$0	\$0
65780 - OCULAR SURFACE RECONSTRUCTION; AMNIOTIC MFMBRANF T	\$16,500	10	\$5,845	\$0	\$5,845	\$8,518	\$494	\$9,012	35.4%	\$0	\$1,643

ICD10 Unspecified

Review the ICD10 codes that have "Unspecified" in their descriptions

VertexDr

ProfileID ProvidingPhysicianFullName

ICD10Count Calendar ExtPeriod

ICD10 Diagnostic Code	ICD10 Diagnostic Code Description	201801	201802	201803	201804	Grand Total
A69.20			1			
B00.9		1				
B30.9		5	5	5	4	
D31.30		1	1	1		
D31.91		2	1	2	1	
D31.92		2	1	3	1	
D49.81				1		
D86.9		2	2			
E03.9		1			2	
E07.9		1	2	1	1	
E70.30				1	1	
E70.319					1	
E78.00			1	2		
F03.90			1	1		
F17.200		1	1		2	
G30.9			2			
G45.9		2	1	1	1	
H00.019			1			
H00.029					2	
H00.19		2	1	1		
H01.001		7	7	7	7	
H01.002		7	7	7	7	
H01.003		4	4	5	5	
H01.004		7	7	7	7	

Insurance Analysis

Insurance Analysis

VertexDr Total AR \$1,030,954

Calendar Year: [v] Calendar Month: [v] ProvidingPhysicianFullName: [v] ServiceLocation Desc: [v]

Data Headers: [v] Drop Column Fields Here: [v]

PrimaryInsurance Desc	Grand Total											
	Charges	PctOfColCharges	Count	InsurancePayment	PatientPayment	TotalPmts	InsuranceAdjustment	PatientAdjustment	TotalAdj	%Reimb	Refunds	AmountRemainir
	\$20,158	0.19%	236	-\$6,462	\$24,578	\$18,116	\$369	\$5,939	\$6,308	89.9%	\$50	-\$6,9
AARP	\$1,760	0.02%	11	\$129	\$91	\$220	\$63	\$0	\$63	12.5%	\$0	\$1,4
AETNA HEALTH PLANS-MC/SC/PPO	\$32,331	0.30%	187	\$10,491	\$7,317	\$17,808	\$7,623	\$863	\$8,486	55.1%	\$31	\$6,9
AETNA-COMMERCIAL	\$34,367	0.32%	190	\$15,646	\$9,745	\$25,391	\$6,002	-\$545	\$5,457	73.9%	\$0	\$5,1
AETNA-MEDICARE	\$19,278	0.18%	73	\$7,791	\$2,341	\$10,131	\$9,056	\$5	\$9,060	52.6%	\$0	\$2
ALLIED BENEFITS GROUP	\$0	0.00%	0	\$0	\$0	\$0	\$0	\$0	\$0	.0%	\$0	\$0
AMERICAN POSTAL WORKERS UNION	\$676	0.01%	5	\$344	\$115	\$459	\$0	\$0	\$0	67.9%	\$0	\$2
AUTO INSURANCE	\$470	0.00%	2	\$242	\$0	\$242	\$516	\$536	\$1,053	51.4%	\$75	\$2
BENEFIT ADMIN OF NEW ENGLAND	\$0	0.00%	0	\$201	\$0	\$201	\$49	\$0	\$49	.0%	\$0	\$0
BLUE BENEFIT ADMIN-VNA PREFIX	\$6,183	0.06%	49	\$3,904	\$704	\$4,608	\$2,848	\$350	\$3,198	74.5%	\$10	\$3
BLUE CR/BLUE SHLD ANTHEM	\$6,266	0.06%	49	\$2,146	\$1,932	\$4,078	\$1,309	\$382	\$1,691	65.1%	\$0	\$1,0
BLUE CROSS/BLUE SHLD MASS	\$677,206	6.22%	4,634	\$268,154	\$113,050	\$381,204	\$234,671	\$50,428	\$285,099	56.3%	\$694	\$51,8
BMC CONNECTOR	\$1,622	0.01%	10	\$429	\$0	\$429	\$380	\$296	\$676	26.5%	\$0	\$5
CARE IMPROVEMENT PLUS	\$0	0.00%	0	\$123	\$0	\$123	\$97	\$0	\$97	.0%	\$0	\$0
CELTICARE	\$357	0.00%	2	\$0	\$0	\$0	\$0	\$357	\$357	.0%	\$0	\$0
CHAMPVA	\$1,553	0.01%	11	\$668	\$0	\$668	\$570	\$142	\$712	43.0%	\$0	\$4
CHILDRENS MEDICAL/J.H.	\$1,216	0.01%	9	\$381	\$18	\$399	\$575	\$512	\$1,087	32.8%	\$0	\$0
CIGNA HEALTH PLANS HMOS	\$154,771	1.42%	956	\$67,225	\$38,088	\$105,313	\$35,995	\$3,281	\$39,276	68.0%	\$0	\$22,3
CIGNA INDEMNITY	\$9,184	0.08%	56	\$4,803	\$3,029	\$7,833	\$1,515	\$79	\$1,593	85.3%	\$0	\$8
COMMERCIAL INSURANCE	\$61,619	0.57%	429	\$28,356	\$1,239	\$29,595	\$34,735	\$2,939	\$37,674	48.0%	\$0	\$9,5
COMMONWEALTH CARE ALLIANCE	\$1,338,560	12.30%	7,751	\$561,133	\$3,398	\$564,531	\$613,323	\$2,901	\$616,224	42.2%	\$25	\$208,8
COMMONWEALTH INDEMNITY PLAN	\$61,948	0.57%	389	\$32,973	\$17,082	\$50,055	\$7,856	\$570	\$8,427	80.8%	\$0	\$6,2
CONNECTICARE	\$16,783	0.15%	104	\$3,895	\$4,887	\$8,782	\$3,627	\$578	\$4,205	52.3%	\$0	\$4,9
CONNECTICARE-MEDICARE	\$3,106	0.03%	18	\$1,262	\$663	\$1,925	\$795	\$192	\$987	62.0%	\$0	\$5

Month over Month CY vs PY

Month Over Month Current Year Vs Prior Year

VertexDr

Drop Filter Fields Here

Data Headers: ServiceLocation Desc, Calendar Month

Drop Column Fields Here

ServiceLocation Desc	Grand Total											
	ChargesPY	ChargesCY	ChgDif	CountPY	CountCY	CTDiff	TotalPmtsPY	TotalPmtsCY	TtlPymtDiff	WrvuPY	WrvuCY	WrvuDiff
BAYSTATE MEDICAL CTR-OUTPT	\$75,095	\$144,350	\$69,255	46	85	39	\$29,444	\$46,433	\$16,990	405.65	811.31	405.66
BLOOMFIELD SATELLITE OFFICE	\$555,274	\$583,888	\$28,614	4,411	4,394	-17	\$257,305	\$302,830	\$45,524	3,685.08	3,734.30	49.22
CATARACT LASER CENTER	\$416,415	\$489,195	\$72,780	282	331	49	\$170,745	\$184,622	\$13,877	2,014.39	2,518.45	504.06
DR MENZER EYE PRACTICE	\$1,286,467	\$1,522,786	\$236,319	10,039	11,285	1,246	\$586,771	\$617,161	\$30,390	8,246.78	9,391.74	1,144.96
MERCY MEDICAL CENTER-OUTPT	\$0	\$190	\$190		1	1	\$0	\$94	\$94	.00	2.43	2.43
SURGERY CENTER OF NEW ENGLAND	\$18,655	\$21,300	\$2,645	15	16	1	\$12,405	\$10,336	-\$2,069	98.92	116.49	17.57
Grand Total	\$2,351,906	\$2,761,709	\$409,803	14,793	16,112	1,319	\$1,056,670	\$1,161,476	\$104,806	14,450.82	16,574.72	2,123.90

Month over Month 2016 vs 2017

Month Over Month 2016 Vs 2017

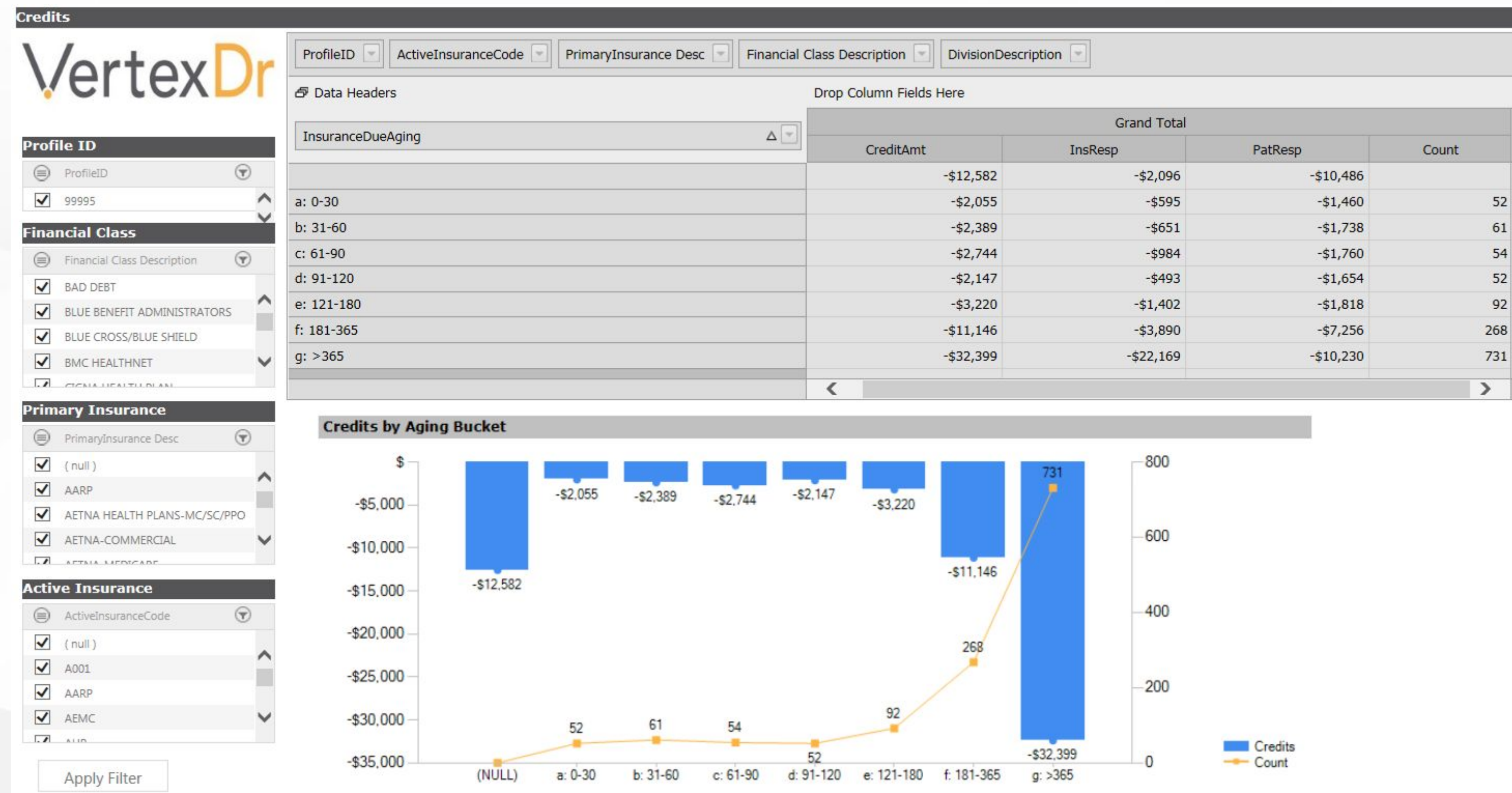
VertexDr

Calendar Month

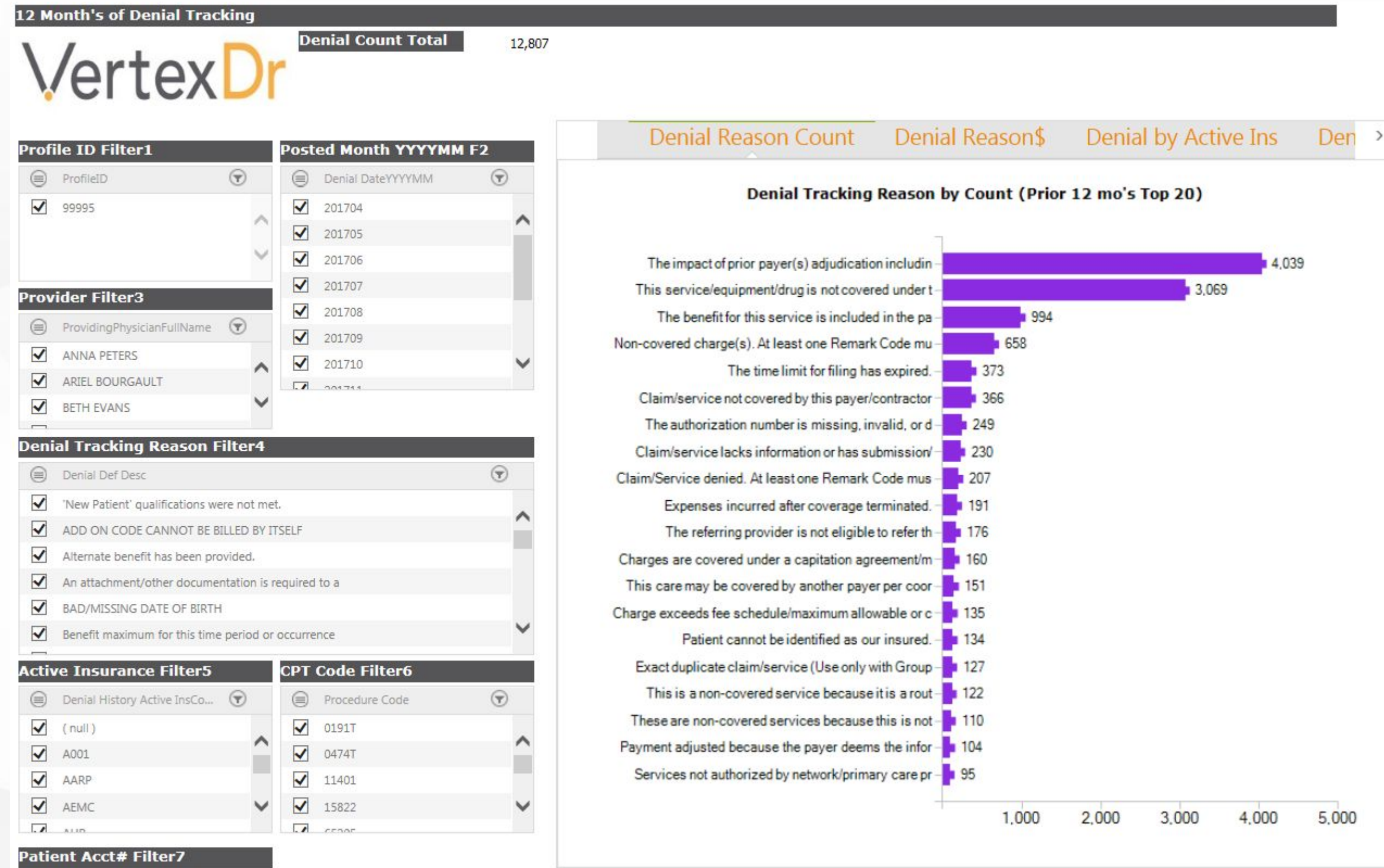
Data Headers Drop Column Fields Here

ServiceLocation Desc	Grand Total											
	Charges15	Charges16	ChgDif	Count15	Count16	CTDiff	TotalPmts15	TotalPmts16	TtlPyntDiff	Wrvu15	Wrvu16	WrvuDiff
BAYSTATE MEDICAL CENTER-ER	\$300	\$75	-\$225	3	1	-2	\$151	\$33	-\$118	2.64	.45	-2.19
BAYSTATE MEDICAL CENTER-INPT	\$2,345	\$675	-\$1,670	14	4	-10	\$1,553	\$425	-\$1,128	28.00	7.84	-20.16
BAYSTATE MEDICAL CTR-OUTPT	\$200,990	\$306,425	\$105,435	123	185	62	\$75,944	\$112,639	\$36,695	1,070.61	1,650.70	580.09
BLOOMFIELD SATELLITE OFFICE	\$1,374,845	\$1,924,011	\$549,166	10,568	14,891	4,323	\$761,649	\$1,019,702	\$258,052	9,059.79	12,754.15	3,694.36
CATARACT LASER CENTER	\$1,153,735	\$1,267,370	\$113,635	813	838	25	\$470,699	\$556,165	\$85,466	5,494.65	6,066.54	571.89
DR MENZER EYE PRACTICE	\$3,980,090	\$4,530,224	\$550,134	31,471	35,041	3,570	\$1,890,926	\$2,107,125	\$216,199	25,763.36	28,957.05	3,193.69
MERCY MEDICAL CENTER-OUTPT	\$0	\$0	\$0			0	\$11	\$0	-\$11	.00	.00	.00
SURGERY CENTER OF NEW ENGLAND	\$184,270	\$94,910	-\$89,360	137	73	-64	\$86,192	\$43,847	-\$42,346	950.76	490.34	-460.42
Grand Total	\$6,896,575	\$8,123,690	\$1,227,115	43,129	51,033	7,904	\$3,287,127	\$3,839,936	\$552,808	42,369.81	49,927.07	7,557.26

Credit Balance



Denials



Contractual Adjustments

Contractual Adjustments

VertexDr

Calendar ExtPeriod ProvidingPhysicianFullName ServiceLocation Desc DivisionDescription

InsuranceAdjustment Count

Drop Column Fields Here

TransactionCode	TransactionDesc	Grand Total	
		InsuranceAdjustment	Count
AAARP		349.47	5
AAEMC		8,952.44	55
AAHP		11,932.83	180
AAUTO		142.96	4
ABCS		233,585.68	3,306
ABMC		390,489.04	3,916
ACCA		613,305.55	6,480
ACHAMP		910.31	26
ACHP		36,149.60	405
ACIP		128.52	10
ACOM		101,445.23	1,180
ACTC		4,065.88	78
ACTCM		355.69	5
ADAV		-59.10	0
AEVER		1,163.06	16
AEYEM		77,077.73	695
AFALL		69,124.63	637
AFBCS		15,251.50	163
AHC		100.87	2
AHNE		1,015,476.60	11,860
AHP		6,782.84	106
AHUM		96.03	4
ALOC		-15.00	-1

Non-Contractual Adjustments

Non-Contractual Adjustments

VertexDr

Calendar ExtPeriod ProvidingPhysicianFullName ServiceLocation Desc DivisionDescription Financial Class Description

PatientAdjustment Count

Drop Column Fields Here

TransactionCode	TransactionDesc	Grand Total	
		PatientAdjustment	Count
ABAD		5.00	0
ABUND		58,621.58	1,142
AC		8,118.15	24
ACA		988.80	67
ACB		42,891.10	834
ACC		753.72	8
ACD		4,434.03	120
ACHAR		3,738.71	69
ACOLL		-15,446.20	-310
ACOUR		1,777.60	33
AD		-420.53	73
AEC		-4,248.79	-69
AFHSH		5.00	1
AFILE		11,318.43	100
AFILEG		1,457.36	14
AGLOB		1,769.00	11
AMED		3,225.00	37
AMIN		145.18	68
AMINR		-91.95	47
AMUE		.00	0
ANCP		1,534.00	22
ANCS		8,504.42	85
ANOAUTH		13,342.85	115

Insurance Submission Errors

Insurance Submission Errors / A review of errors from the previous night's closing

VertexDr

InsSubErrors ProfileID | DivisionDescription | ProvidingPhysicianFullName | PrimaryInsurance Desc

Count | Charges | InsSubErrors Priority

InsSubErrors Code	InsSubErrors Desc	Primary		Secondary		Grand Total	
		Count	Charges	Count	Charges	Count	Charges
20		3	\$407			3	\$407
21		6	\$1,072			6	\$1,072
23		2	\$242			2	\$242
48				24	\$5,116	24	\$5,116
51		15	\$1,799			15	\$1,799
75		2	\$300			2	\$300
Grand Total		28	\$3,820	24	\$5,116	52	\$8,936

Presentation Available Post Forum



VertexDr

VERTEXDR TRAINING PORTAL



VertexDr

THANK YOU!

vertexdr.com | 800.327.0955

a MERIDIAN MEDICAL MANAGEMENT company